

Foundation Funding Application Guidelines



Table of Contents

About St John of God Foundation	1
Primary focus areas	2
Who can apply for funding	5
What can be funded	6
Funding considerations	6
Process for applying	7

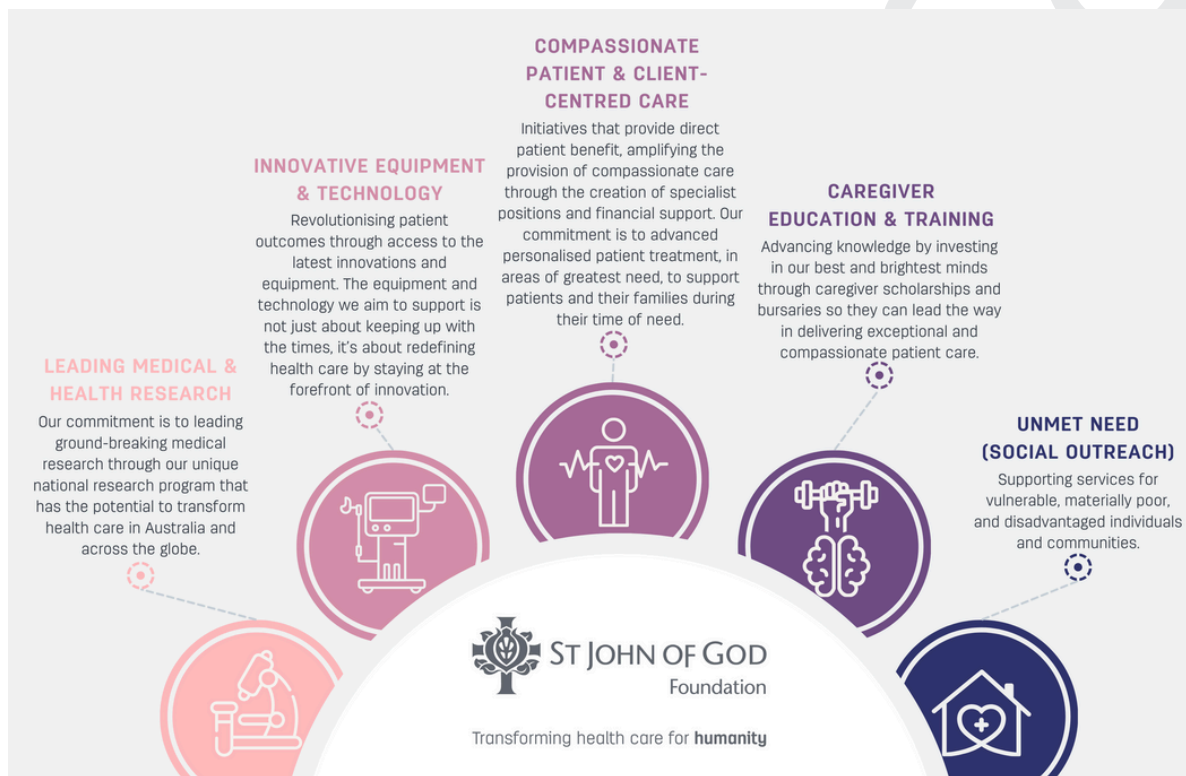
About St John of God Foundation

St John of God Foundation and St John of God Health Care are not-for-profit organisations working together to improve health care in our community. Our commitment is to advancing discoveries in health care with a focus on human dignity and compassionate care.

Existing hospital resources can cover essentials, however there is always more we can do to ensure exceptional care and facilities are always available for our communities. Contributions from compassionate individuals, families, and organisations help to enable advanced treatments and transformational care that may not otherwise be possible through traditional means. The Foundation aligns support with health care areas that have the greatest connection for our donors.

Primary focus areas

Five key areas for funding support;



Leading Medical & Health Research

A culture of research and inquiry is a vital strategy to aid in the advancement of medical knowledge, which leads to better health outcomes for patients. We have an opportunity to both change and save lives through the transformative power of knowledge and translational research, that is, research from “bench to bedside” that is integrated with our unique compassionate patient care. Our commitment to conducting ground-breaking clinical trials and medical research leads to new treatments, therapies and cures.

The Foundation is able to fund research that;

- Pioneers new ways to prevent, treat, manage and cure life-threatening and life-limiting diseases for patients.
- Will have an expected translational impact on future clinical practice and models of care within SJGHC.
- Will be led by SJGHC caregivers or VMOs – it is accepted that research may be done in collaboration with SJGHC approved tertiary education institutions and specialist research institutions across Australia and globally.
- Has obtained any governance approvals or ethics approval from the St John of God Health Care Human Research Ethics Committee (HREC).

Examples of donor funded research;

- Colorectal Cancer Research project; personalised care directed at patient's unique tumour biology, and improve survival and quality of life for patients with bowel cancer.
- Multiple Sclerosis Research project; studying employing serum neurofilament light chain measures for management of multiple sclerosis,
- Orthopaedic surgical robot research; biostatistical analysis of data from robot-assisted joint replacement surgeries
- Spiritual Distress Study; established a group psychotherapy program with self-nominated cancer patients, using a psycho-spiritual-mindfulness based cognitive behavioural model.
- MOST (Measure of Ovarian Symptoms and Treatment concerns) trial; change the way in which ovarian, fallopian tube and primary peritoneal cancer patients receive follow-up care.

Innovative Equipment & Technology

In the dynamic landscape of healthcare, the rapid pace of technological advancement is revolutionising the way we deliver care. As a healthcare provider committed to excellence, we are dedicated to staying at the forefront of innovation, providing our patients with access to cutting-edge medical equipment and technology. Contributions to funding medical equipment becomes a cornerstone in this pursuit, unlocking a realm of possibilities for improved patient outcomes. The innovative equipment we aim to acquire is not just about keeping up with the times; it's about redefining healthcare by minimising recovery times, facilitating less invasive procedures, and ultimately alleviating stress and anxiety for our patients.

The Foundation is able to fund equipment that represents significant advances in technology and enables an improved standard of patient care.

The Foundation cannot fund routine replacement of equipment or fund equipment for research projects that are not being used within a SJGHC facility. For funding requests pertaining to major equipment acquisitions or projects, the necessary business case and internal approvals must be sought prior to completing an Expression of Interest form.

Examples of donor funded innovative technology & equipment;

- Trident HD portable mammogram system
- Intraoperative Radiation Therapy (IORT)

- Cranial Ultrasound Probe
- Drager Babylog Ventilator for neonatal care
- Cuddle beds for palliative care.

Compassionate Patient & Client-Centred Care

At the heart of SJGHC's Mission is a steadfast dedication to seeing each patient as an individual deserving of compassion, dignity, and the most advanced personalised treatments available, ensuring that their journey towards wellness is met with unwavering support and understanding.

The Foundation is able to fund patient care projects that;

- Aim to support not only medical needs but also uplift spirits and restore hope for patients and/or their families during times of vulnerability.
- Fund the establishment of critical new positions, employed through SJGHC, that aim provide exceptional patient support and care. Positions can only be funded by the Foundation for a maximum of two years.

Examples of donor funded projects supporting patient care;

- Inflammatory Bowel Disease Clinical Nurse Specialist.
- Gifts of Hope which provide direct financial support to cancer patients who are struggling with the cost of treatment.
- Clinical Nurse Consultant for Cancer Services.
- Sensory gardens that create a calming reflection space for caregivers and patients.
- Cognitive impairment kits for vulnerable patients

Caregiver Education & Training

Scholarships have helped to unlock the potential of remarkable caregivers, empowering them to embark on further study whilst they continue to answer their calling to bring healing and care to patients. An investment in our people is an investment in the future of healthcare.

Examples of donor funded nurse education and training;

- Sister Bridget Clancy Scholarships for the Empowerment of Women
- Annette Guthrie PCA training bursary
- Oncology Nurse training bursary

Unmet Need (Social Outreach)

Providing support in areas of unmet needs for vulnerable and disadvantaged individuals and communities is deeply connected to SJGHC's mission and values. We will support projects that aim to uplift and empower those facing challenges, addressing critical gaps in services for vulnerable populations and fostering a more inclusive and equitable society.

The Foundation encourages philanthropic support applications for Aboriginal and Torres Strait Islander health care initiatives.

Examples of donor funded projects supporting unmet community need;

- Horizon House: A home, care and support for young people aged 16 to 22 at risk of homelessness, providing stable accommodation, counselling and a life skills program to prepare them for independence.
- Transition to Independence Program: Supporting the transition of young people to independent living by empowering them with life skills.
- Driver Education Program: Securing a driver's licence is an important milestone for many in their journey to independence and gainful employment.

What can be funded

The Foundation can accept applications that meet the following criteria;

- Are seeking total Foundation funding of \$150,000 or less
- Align with one of the five key areas of focus; research, innovative equipment and technology, patient care, caregiver education and training and unmet need.
- The project can be delivered within 12-24 months.
- The project funds can be acquitted within 12-24 months.
- The project has measureable outcomes for impact reporting

The St John of God Foundation strongly encourages all prospective applicants to contact the Foundation Funding Coordinator prior to completing an expression of interest form.

Who can apply for funding

The primary funding applicant must be a current SJGHC caregiver or VMO who is seeking funding support for a project that benefits a WA Hospital/s or Service/s.

The funding applicant must have project support from the relevant WA Hospital or Services CEO before applying.

The St John of God Foundation does not provide funding for caregiver or VMO conference travel and attendance expenses. We recommend discussing potential opportunities of this kind with your respective Learning and Development team.

The St John of God Foundation does not currently support funding applications, through this process, for Victorian or NSW Hospitals and/or Services. If you have a project you wish to submit to the Foundation that supports hospitals and/or services in these areas, please contact Preema Wong, Director of Philanthropy at Preema.Wong@sjog.org.au.

Funding considerations

Through this collaborative process, we empower caregivers like you to play a pivotal role in shaping the future of healthcare in WA. Your ideas and input are essential, as your deep understanding of critical gaps at your Hospital or Service location ensures that our efforts together will drive impactful change where it matters most.

Particular consideration is given to projects that demonstrate;

- Innovation and significant advancement in the relevant field.
- Critical need or service gaps, and show capacity to deliver planned outcomes in a sustainable and measurable way.
- Significant impact to a large number of patients, caregivers and/or the community at large.
- Unmet community need and/or compassionate patient-centred care.
- Support for Aboriginal and Torres Strait Islander health care initiatives.

Through this application process, the Foundation will not fund projects that do not align with one of our five key areas of focus or the following;

- Routine replacement of equipment.
- Projects that are not led by a SJGHC employee or VMO.
- Projects that will not be delivered at SJGHC sites.
- Projects seeking Foundation funding over \$500,000.
- Applications that cannot clearly demonstrate impact and outcomes to donors.
- Applications that do not include a budget clearly outlining all expenses associated with the project.

For projects at WA Hospitals or Services seeking Foundation funding support greater than \$150,000 please contact Teresa Fantoni, Foundation Funding Coordinator on 0498 464 298 or Teresa.Fantoni@sjog.org.au.

Application process



The Foundation team will provide support and feedback to caregivers every step of the way. We will always give the applicant detailed feedback on why an Expression of Interest form or Formal Application is unsuccessful. We suggest that any caregiver wanting to submit a project for funding consideration speak to their line manager or relevant head of department, to ensure the project aligns with their Hospital or Services priorities. CEO's will need to approve all projects before an Expression of Interest form is submitted.

Please note the following guidance in relation to application submission timing;

- It may take a few months for your completed application to be reviewed by the WA Foundation Funding Committee.
- The Funding Committee meets three times a year.
- The Foundation has strict closing dates for EOIs and Final Applications in order for them to be considered at the next Committee meeting. Please contact Teresa Fantoni if you are unsure of the current dates.
- Once your project is approved by the Funding Committee, the Foundation's Philanthropy team will commence actively fundraising for your project. The process of securing donor funding can take up to 12 months.

The WA Foundation Funding Committee consists of representatives from across SJGHC Group Services that represent critical areas including Medical Services, Research, Nursing and Patient Experience, Business Development, Procurement, Finance, Mission and Foundation.



The Philanthropy team is here to help!

Submit your Expression of Interest via <https://sjgf.smartygrants.com.au/>.

We encourage all applicants to speak to a Foundation philanthropy team member before submitting your Expression of Interest form.

If you'd like any additional feedback or support from us during the application process, please contact;

Teresa Fantoni
Foundation Funding Coordinator
E Teresa.Fantoni@sjog.org.au
T 0498 464 298



Transforming health care for **humanity**